

Dear Parents,

THANK YOU for choosing to have your child participate in the Refuge this year! We are so excited to see our students again in person, even if our current circumstances present changes and challenges. Whatever may come we believe God is still in control and working all things together for good!

STAYING CONNECTED

God has designed us for community and connectedness. God calls us to love one another boldly and seek the welfare of our city. We are not just a youth program, but our students are a thriving part of this church! Without our youth we cannot truly carry out our mission. This is why we believe it is so important to continue following Jesus together, and why we are so glad that you are coming to join us. Even before COVID-19 hit, our student ministry was heavily focused on SMALL GROUP DISCIPLESHIP - now more than ever we are narrowing in on small groups as the core of our ministry.

There has been a LOT of responsibility placed on you as a parent to navigate every different environment where your child is present. We have done our best to keep this communication simple and concise. Please read this thoroughly to better understand our situation and what will be asked of your child this fall.

The working plan that we have in place is our effort to honor the guidelines put in place by the elders of FCC. As you know, everything is fluid and ever-changing right now, and we may need to pivot quickly. We will let you know of any changes as quickly as we can.

COMMUNICATION

Fast communication will play a vital role this year in our success. Parents, students, and leaders must be signed up for texting so we can communicate quickly with you about important updates, cancelations, etc. We will only send one or two texts per week. If there are limitations that make this difficult for you, please contact us so that we can work with you to find a solution.

[SIGN UP FOR TEXT COMMUNICATION](#)

You do NOT need to download the app.

NEW MEETING TIMES! (subject to change)

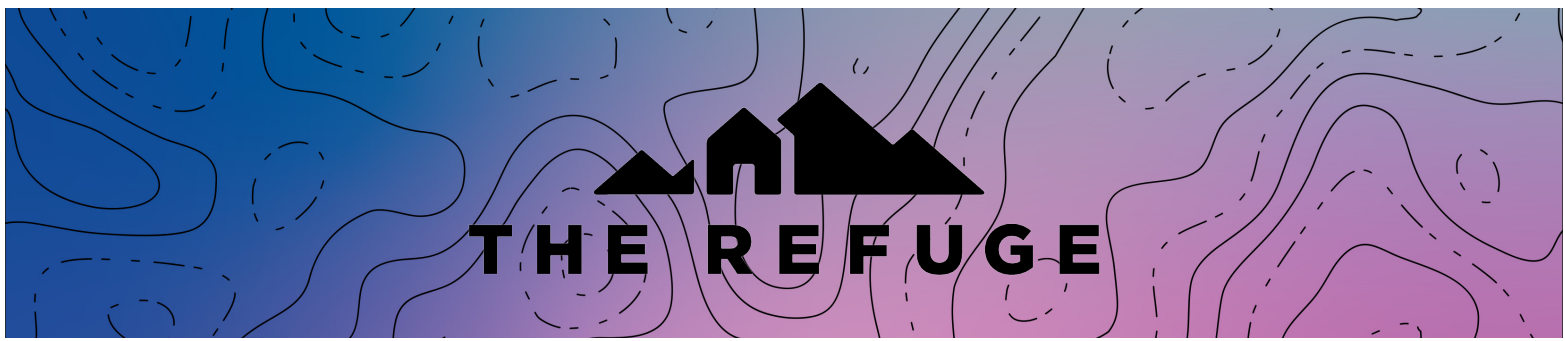
- Middle School | 5:30 - 6:15pm
- Awana | 6:30 - 7:30pm
- High School | 7:45 - 8:45pm

DROP OFF AND PICK UP

Please drop off and pick up your child from the parking spaces - do not park next to the building along the curb. We are anticipating more walking traffic this year with our new transition times (Middle school, Awana, and High School), and need to lessen the amount of cars driving in close proximity to the building. Please also drop off and pick up at the exact designated times above.

ENTERING THE BUILDING

You will be welcomed by our hospitality folks and be directed to go immediately to your assigned space in the building. There will be no hang out time, or large group gathering. Please enter through the NORTH doors of the building.



MASKS & SOCIAL DISTANCING

- Masks and social distancing are required in the building.
- Please read through the attached Building Usage document created by the elders of FCC.
- FCC will provide hand sanitizer.
- If you are showing any COVID-19 symptoms STAY HOME!

SMALL GROUPS

- Small groups will be facilitated as per usual, just adding the element of social distancing and masks. We will be using the entire building this year to allow small groups to social distance (using the auditorium, community room, main lobby, etc.). Very few classrooms will be used for small groups this year as the rooms are too small.
- Small Group Content will be based on the sermon from the previous Sunday.

WORSHIP NIGHT

- The last Wednesday of every month we are planning to have combined worship for MS & HS, 7:45-8:45pm.
- The weeks that we have worship we will NOT have small groups.
- Worship will take place in the church auditorium, not in the Refuge Room.

FALL SCHEDULE

SEPT 30 - Small Groups for MS, Worship Night for HS

OCT 7 - Small Groups

OCT 14 - Small Groups

OCT 21 - Small Groups

OCT 28 - Worship | 7:45 - 8:45pm for MS & HS

NOV 4 - Small Groups

NOV 11 - Small Groups

NOV 18 - Worship | 7:45 - 8:45pm for MS & HS

NOV 25 - NO REFUGE | THANKSGIVING

DEC 2 - Small Groups

DEC 9 - Small Groups

DEC 16 - Worship | 7:45 - 8:45pm for MS & HS

DEC 23 - NO REFUGE | CHRISTMAS

DEC 30 - NO REFUGE | NEW YEARS

From the moment that your child walks through our doors to the time that they go home, our desire is to make everyone feel welcomed, noticed, and loved. We are praying for you as parents as you lead through a very trying time in our world. Please continue to pray for FCC as we seek to help one another follow after Jesus.

Peace,

Ben McMullen & Jake Pierson